



*Physical Design
&
Racking and
Stacking*

>> Photobook

Test &
Acceptance
Spirit Platform

Client



Supplier



Housing



Integrator



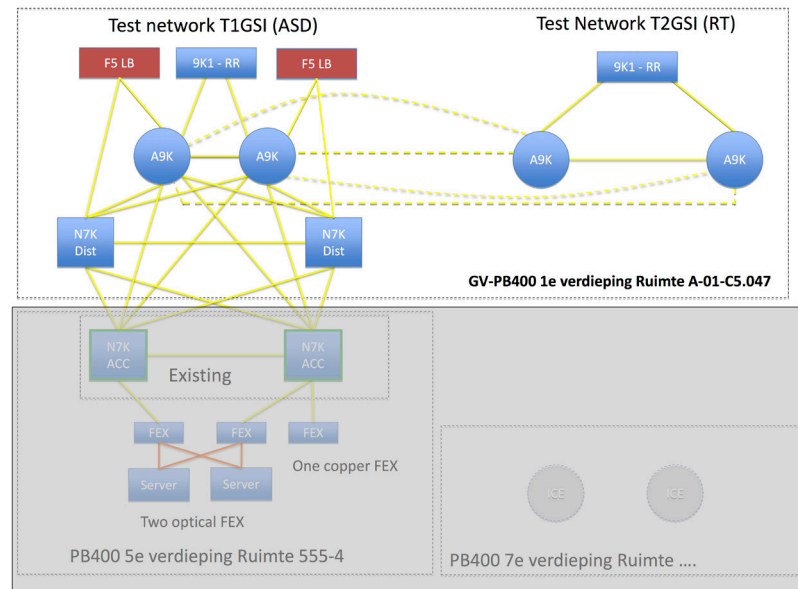
>> Contents



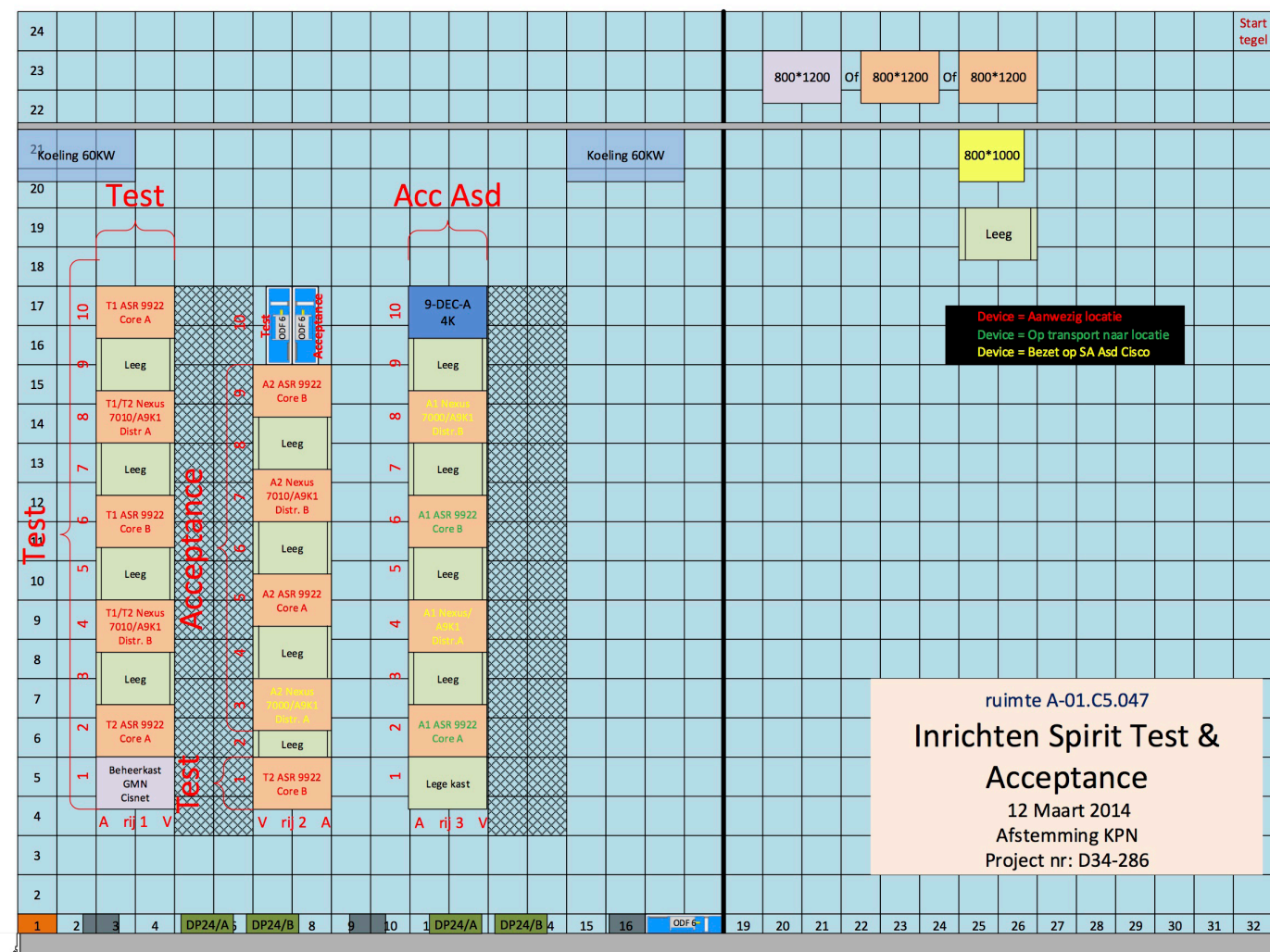
- > Design
- > As built
- > Site preparation
- > Installation Connectivity & Hardware
- > Patching CU & Fibers
- > Test & Delivery



>> Design

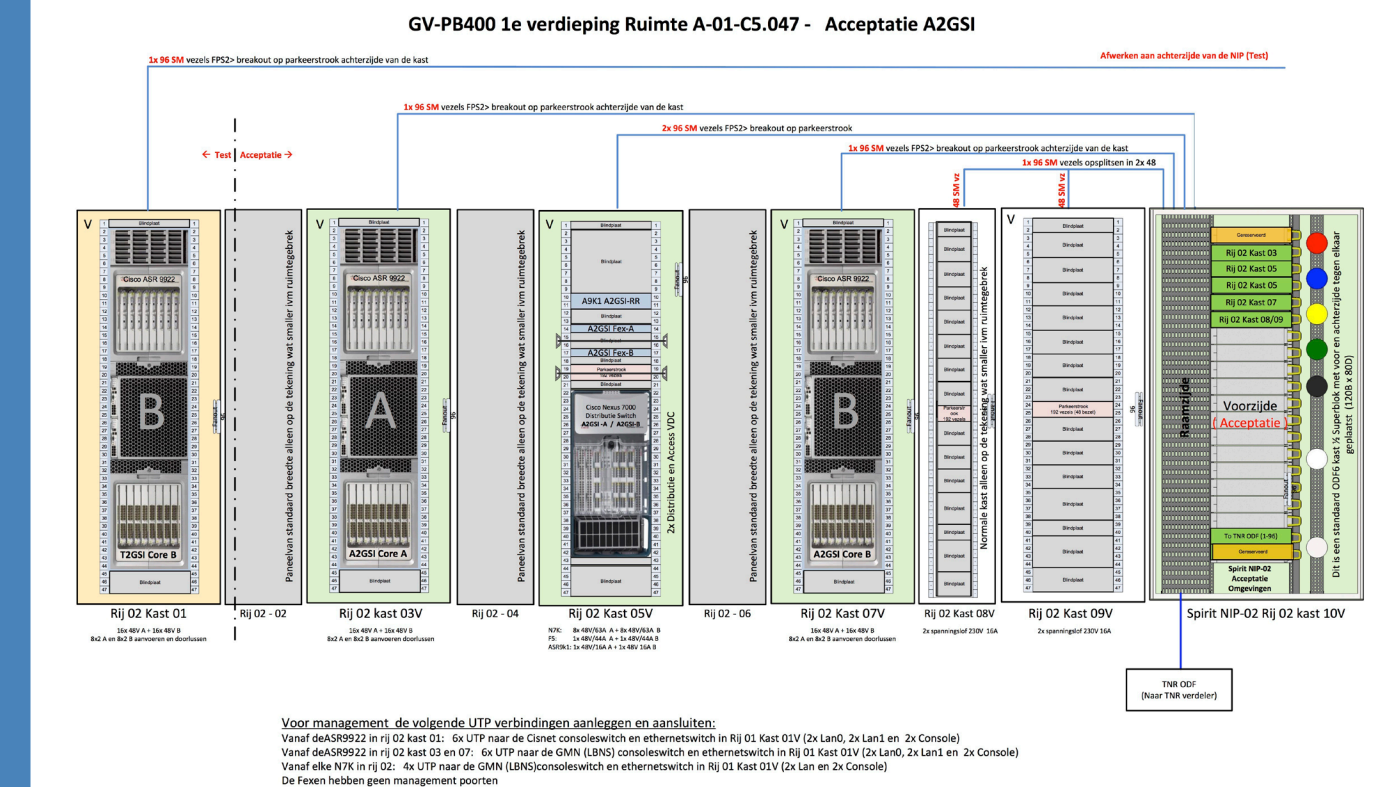


< High level design KPN & Cisco



✓
"Design is not just what it looks like and feels like. Design is how it works!"

Using building blocks for each rack is a benefit for the future.

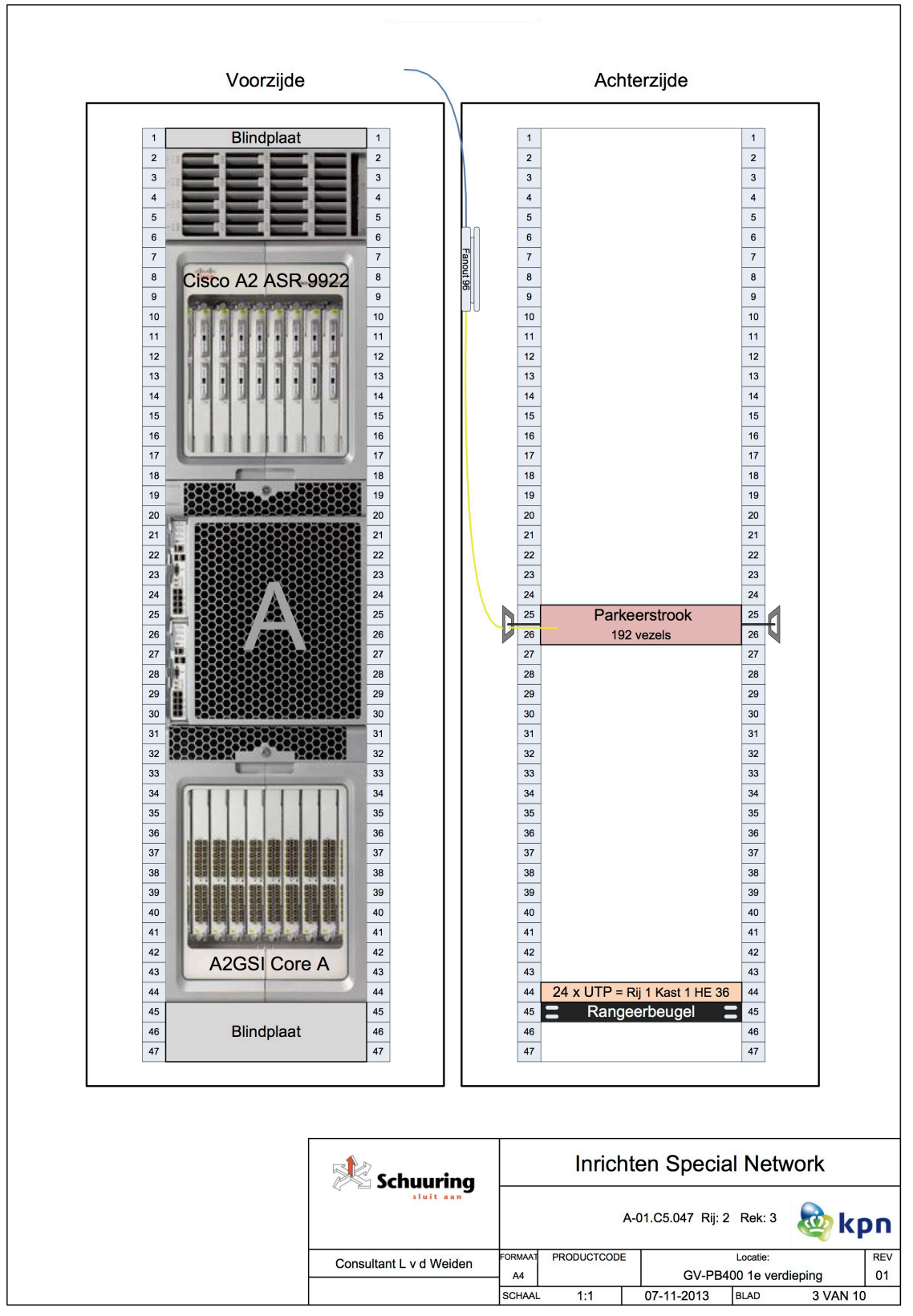


> Physical rack design KPN & Schuuring

< Floor plan design KPN & Schuuring

>> As built

With these building blocks we can show the detail engineering of our rack design.



> Built on location
Schuuring

< Engineering Rack
design
Schuuring



>> Site preperation

KPN support raised floor, cable tray's, light sources and main power supply...



< Raised floor build
KPN

✓ Preperation of other
services on site
KPN



^ Hardware Spirit
delivered on site
Schuuring

Schuuring is taking care of the warehousing for all Cisco hardware.



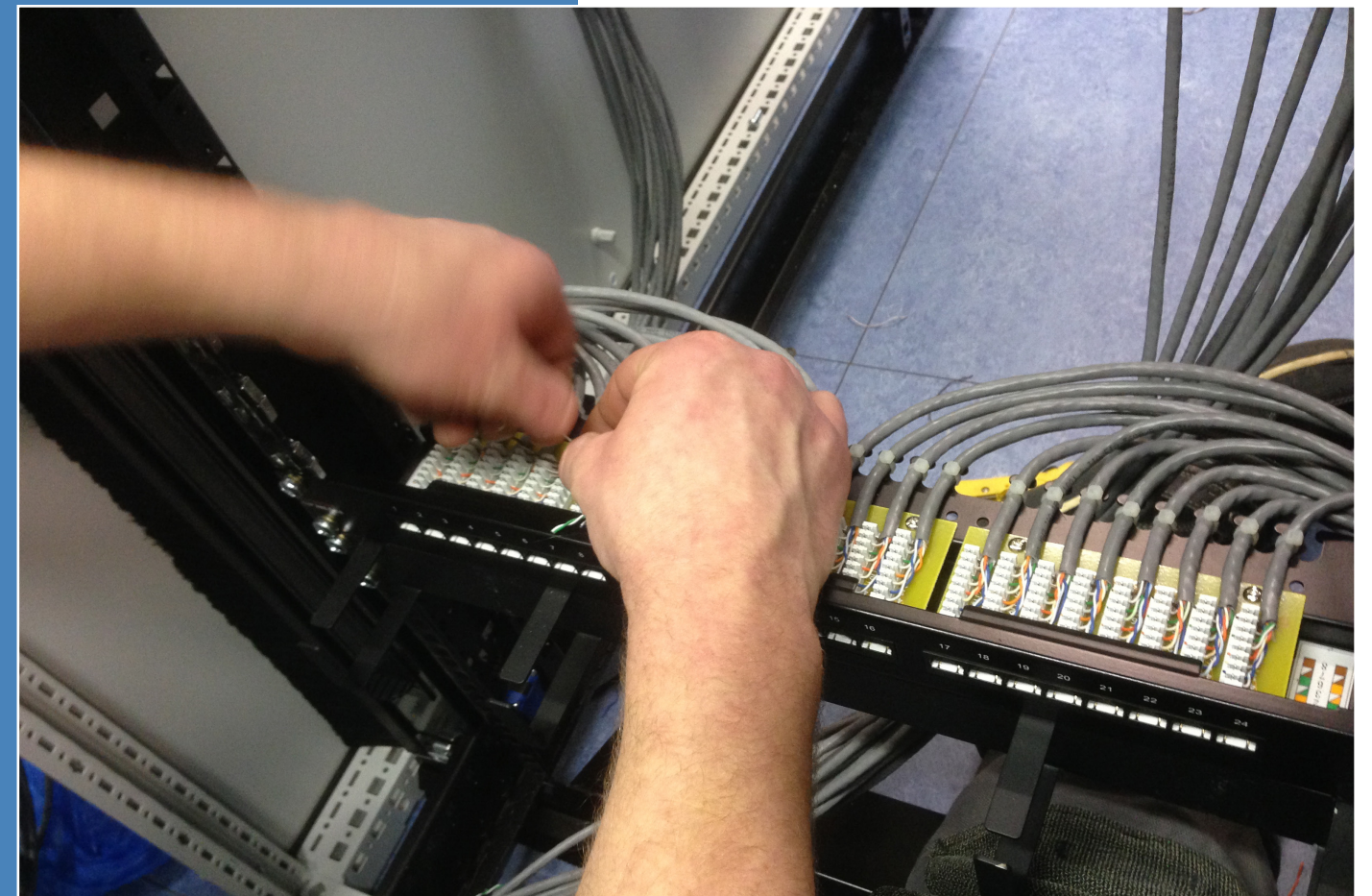
< Hardware storage
Schuuring

> Hardware transported
and delivered on site
Schuuring

✓ All shipments are
documented
Schuuring



>> Installation Connectivity & Hardware

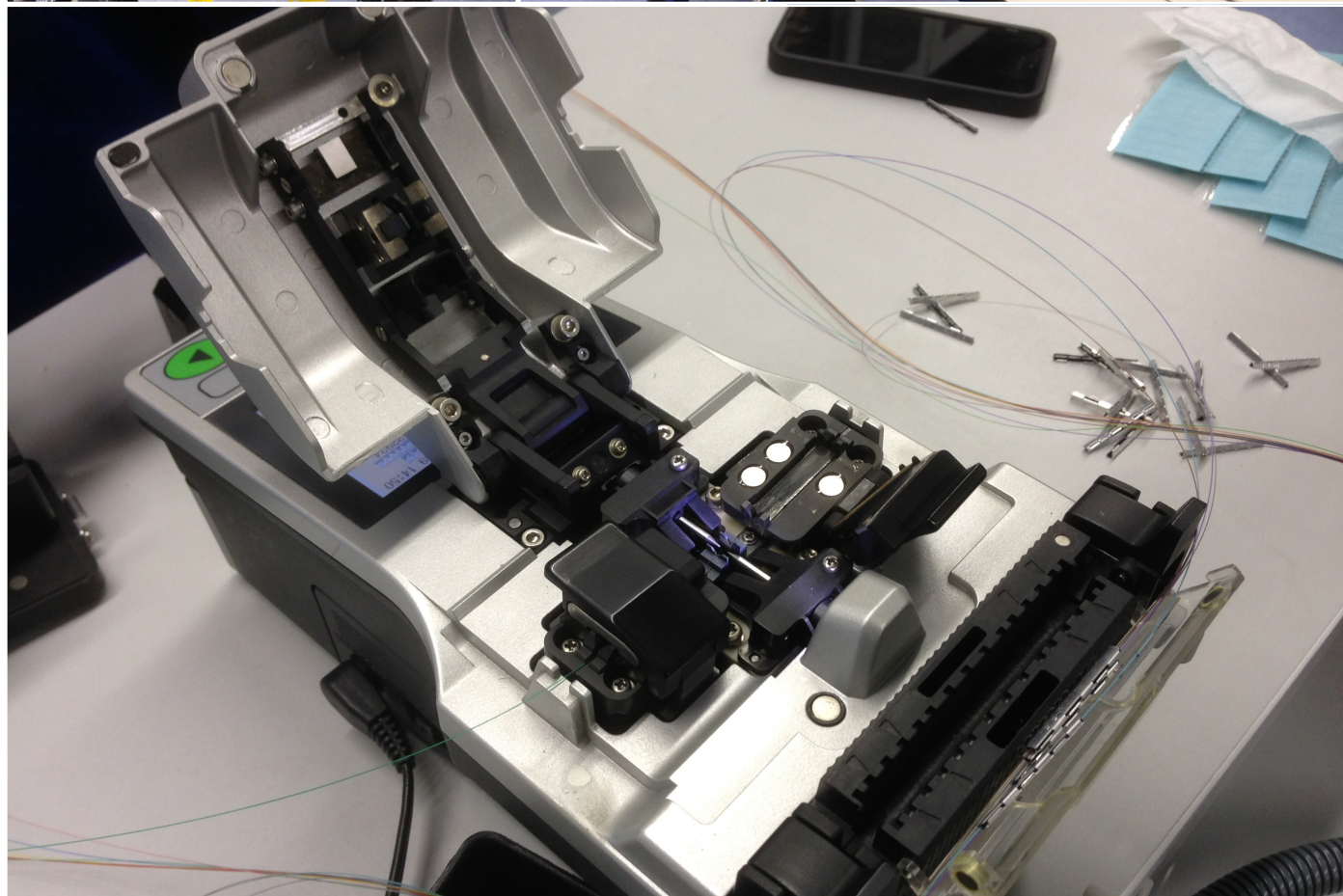


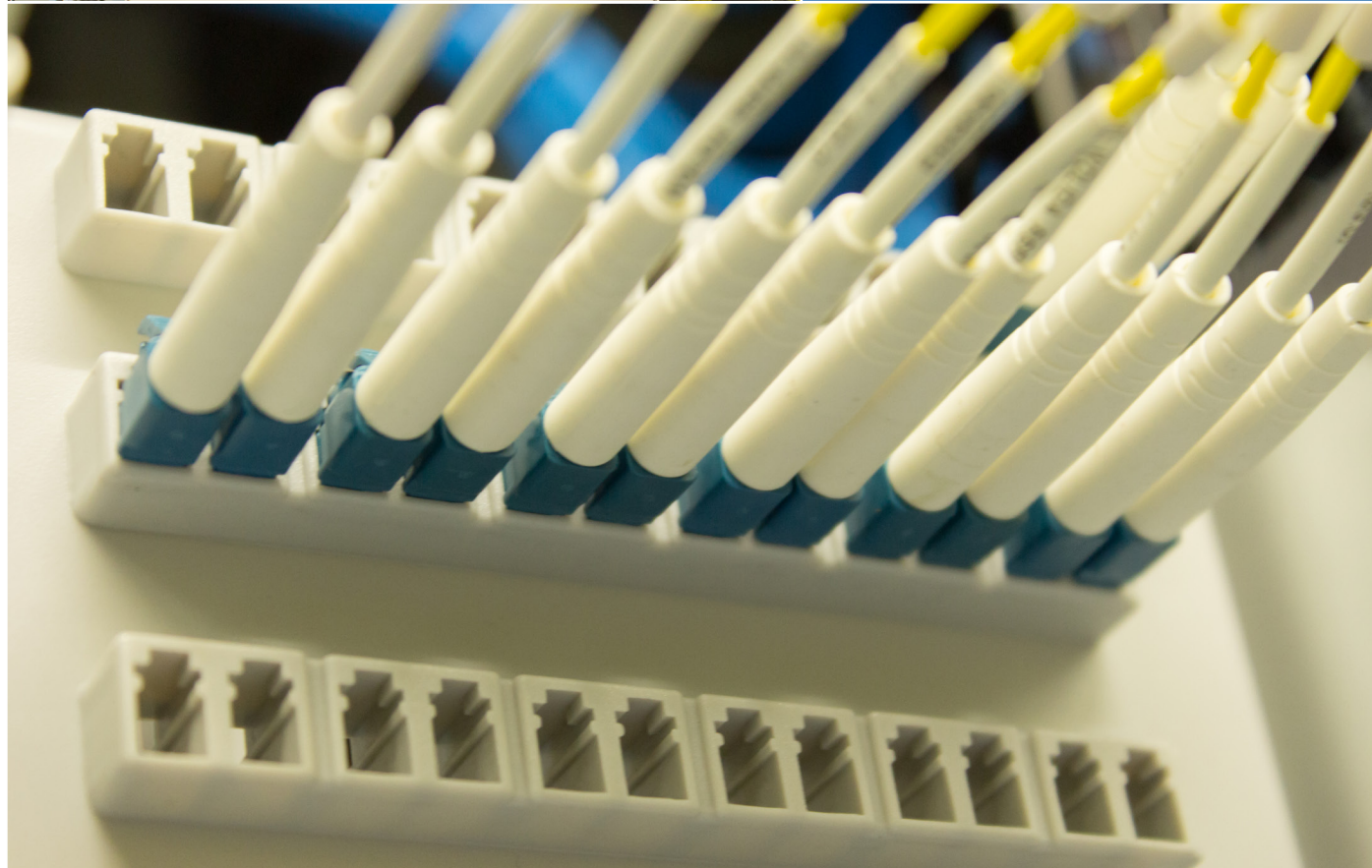
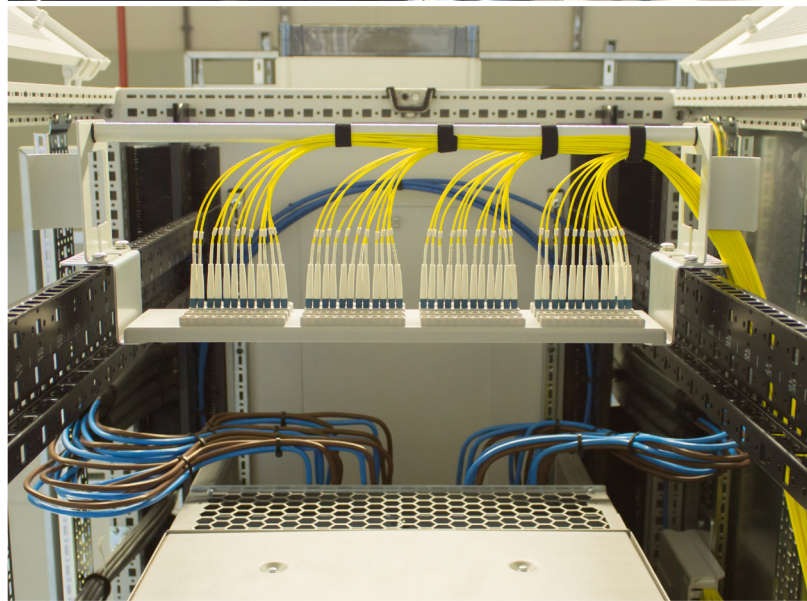
>^ Installing Prefab
cabling CAT6 in network
and performance check

Schuuring

<v Splicing optical
fibers

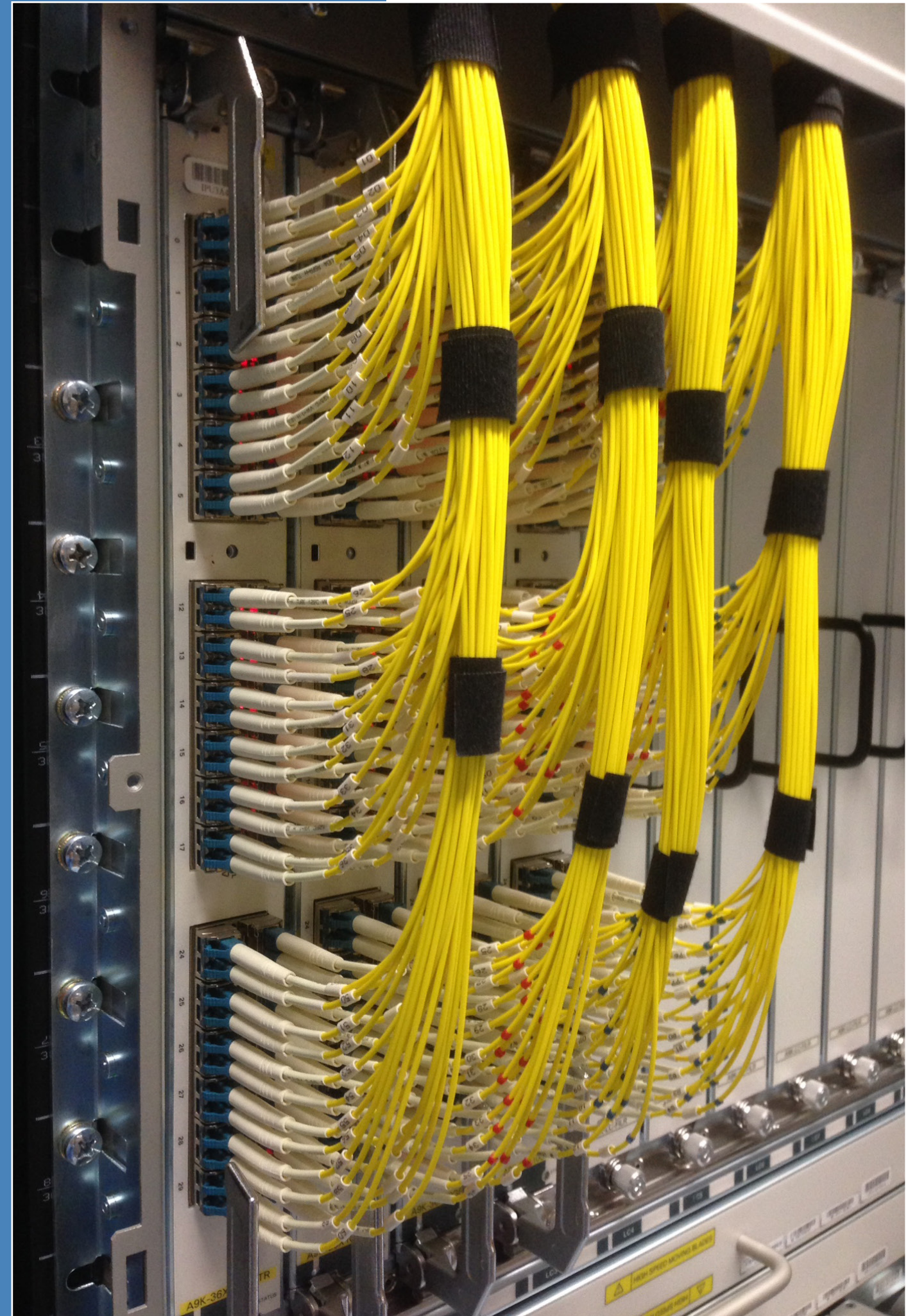
Schuuring





<> Fiber management
innovation
Schuuring

< Fiber storage for
connecting hardware
Schuuring



>> Patching CU & Fibers



^ Maintenance
cabeling on backside of
the rack
Schuuring

< GMN cabeling
inter-row inter-rack
Schuuring

> C-VOIP CU-Cabeling
Fexen with uplink
Schuuring



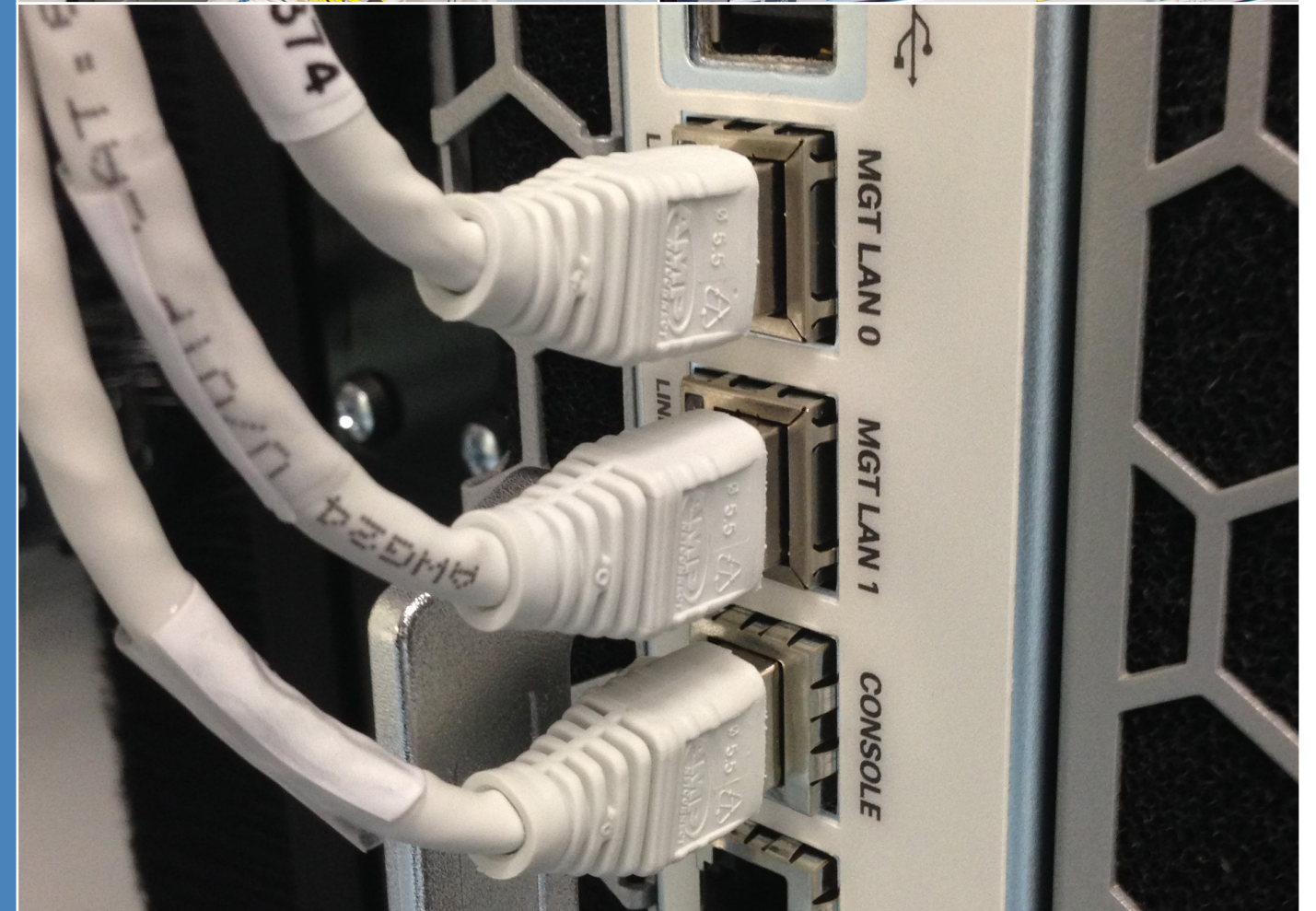
>> Test & Delivery



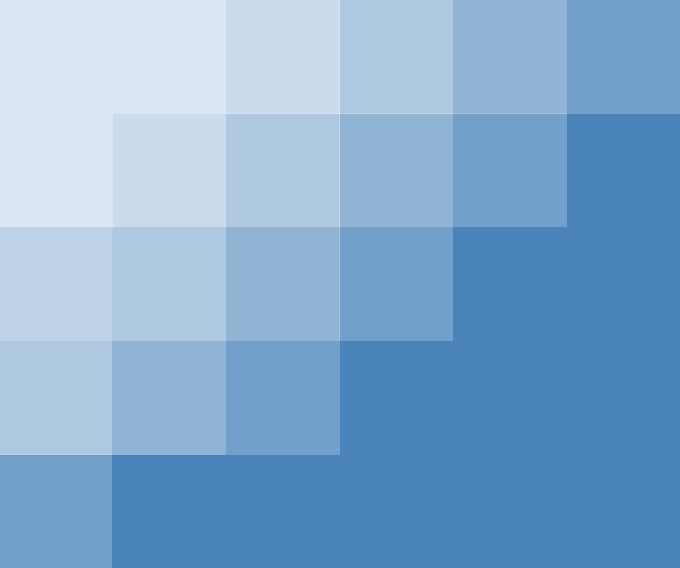
>> Project Amsterdam



A collection of
photo's of Spirit
in Amsterdam
(Production site)







Created by 3Dimensions and Schuuring
www.3dimensions.nl | www.schuuring.nl